

YOUR GUIDE TO VISITING THE RALPH

At The Ralph, we are committed to ensuring that the animals in our care and their human families will always be treated with respect, compassion, dignity, integrity and humility, every step of the way.

We understand how difficult it is when your pet is unwell, and the challenges you may be facing right now. You may have to travel quite a distance to visit The Ralph, and be needing to spend some time in the local area whilst your pet undergoes treatment. That is why we have created this guide to help make sure your experience is as stress-free and seamless as possible.

Getting here

Our address is Fourth Avenue, Globe Business Park, Marlow, SL7 1YG

By car:

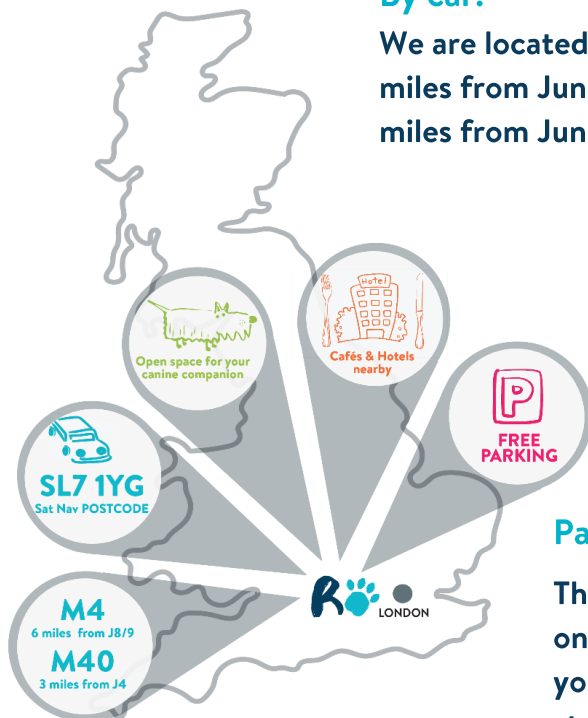
We are located just off the A404, only 3 miles from Junction 4 of the M40 and 6 miles from Junction 8/9 of the M4.

By train:

Marlow train station is a short walk from our hospital. High Wycombe train station is about a 15 minute drive from The Ralph.

Parking:

There is plenty of free parking on-site, and green space for your canine companion to stretch their legs.



Places to stay nearby

If you need to find somewhere to stay whilst your pet is in our care, there are plenty of options nearby. Here is a small selection:



Kenton House Bed and Breakfast offers en-suite rooms and is just a short walk away from Marlow High Street. It is pet friendly and conveniently located 1 mile away from the hospital.
www.marlow-bedandbreakfast.co.uk



The Holiday Inn High Wycombe is ideally located for the M40, with easy links to the M25 and M4. It is about a 10-minute drive from the hospital.
www.ihg.co.uk/holidayinn



The Premier Inn is located near Marlow High Street and train station.
www.premierinn.com

Places to eat

If you need to find somewhere to eat, there are plenty of restaurants, pubs and cafés nearby. There are a couple of options just a short walk from the hospital, and you are spoilt for choice in central Marlow, which is a 20-minute walk or a short drive away.

Cafés:

Café Globe is near to The Ralph and serves a wide variety of freshly prepared food and drinks. Vegan and vegetarian options are available too.

Globeside Industrial Estate, Fieldhouse Lane, Marlow, SL7 1HZ.



Coopers offers arguably the best coffee in Marlow! They have an all-day menu that features locally-sourced, and wholesome food. Vegan and vegetarian options are available. It is just a short walk from The Ralph.

Ground Floor, Unit A, Meter House, Fieldhouse Lane, Marlow, SL7 1LW.

Restaurants:

The Royal Oak is a dog-friendly country pub just outside Marlow. Vegan and vegetarian menus available. Frieth Road, Bovingdon Green, SL7 2JF.

The Giggling Squid serves authentic and fresh Thai food in stylish surroundings. Vegan and vegetarian menus available. 24 West Street, Marlow, SL7 2NB.



Things to do in Marlow

If you find that you have some time to spare whilst in the local area, here are a few ideas:

- Take a walk in Higginson Park - an area of 23 acres with riverside frontage. The park has plenty for families with a large playground, café, public toilets and a skate park open all year. The gardens include a brick-in-grass maze and a wetland area on the fringes of the park.
- Visit St Peter Street – Marlow's oldest and most picturesque street, which runs down to the water's edge. Key buildings include the 19th century St Peter's Church, designed by Pugin, and the Two Brewers pub – a traditional favourite with the Swan Uppers.
- Browse the bustling high street – with its great selection of boutiques and upmarket stores.
- Slightly further afield, there are a number of local National Trust properties that are worth a visit – Cliveden, Hughenden Manor and Grey's Court are all around a 20-minute drive away.
- For more information, the Marlow visitor information service is located in the Library on Institute Road or visit www.mymarlow.co.uk

If you need further information

Please ask us; we are happy to help. We want to make sure your time with us is as straightforward as possible.

Email: Stacey@theralph.vet or call 01628 308330