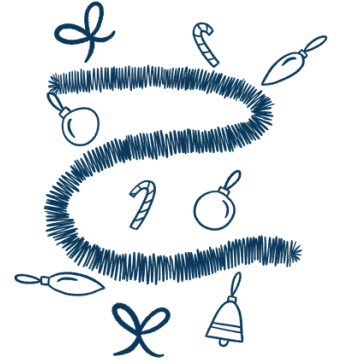


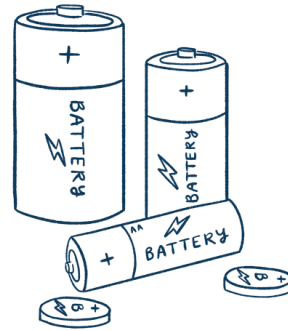
WHAT HOUSEHOLD ITEMS ARE TOXIC TO DOGS + CATS?

Christmas decorations



Antifreeze

BBQ lighter fluid



Batteries

Cleaning products



Essential oils

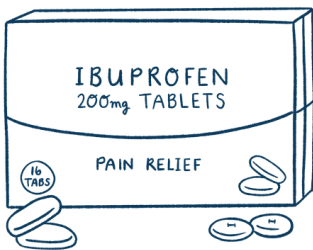


Gardening chemicals

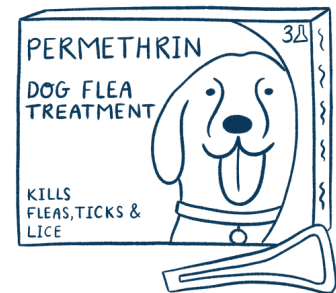


Permethrin

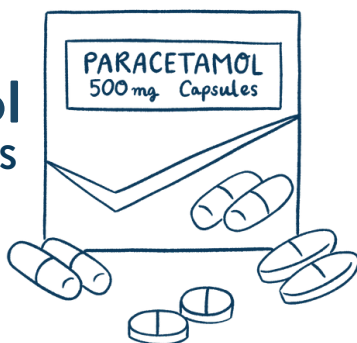
Ibuprofen



Slug pellets



Paracetamol FOR CATS

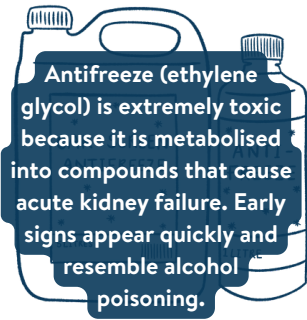


Rodenticides



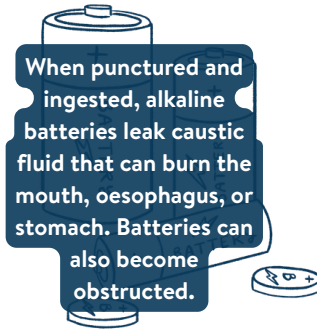
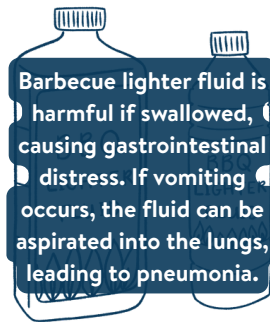
WHAT HOUSEHOLD ITEMS ARE TOXIC TO DOGS + CATS?

Christmas decorations



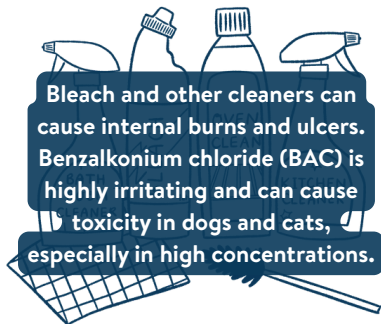
Antifreeze

BBQ lighter fluid

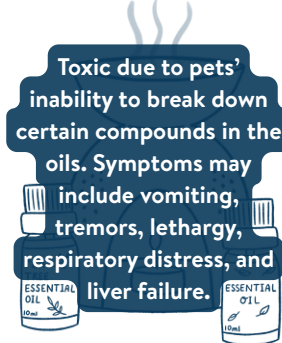


Batteries

Cleaning products



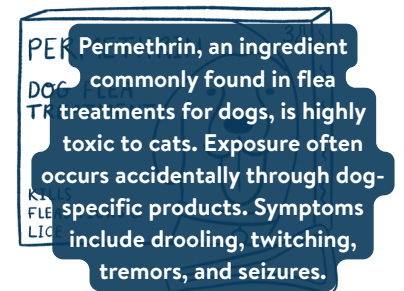
Essential oils



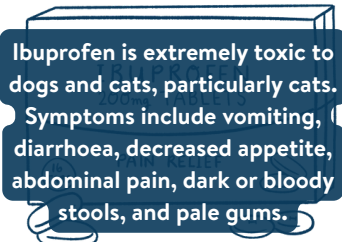
Gardening chemicals



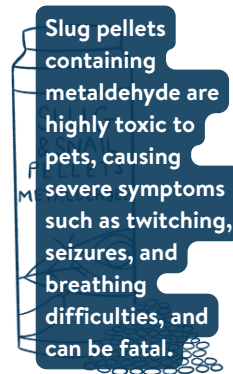
Permethrin



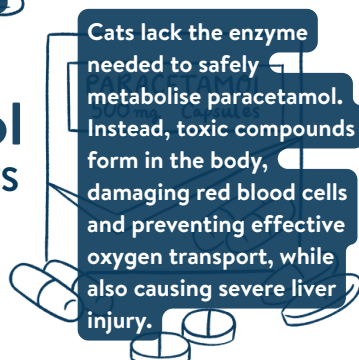
Ibuprofen



Slug pellets



Paracetamol FOR CATS



Rodenticides

